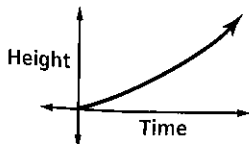


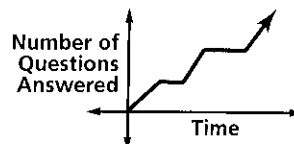
1-8 Practice

Graphs and Functions

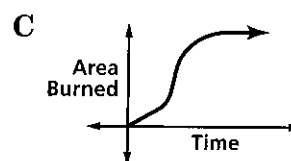
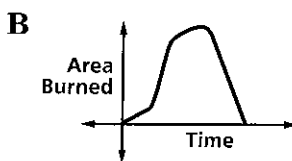
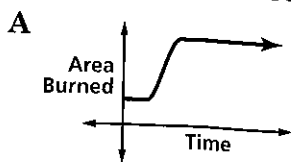
1. The graph below represents the height of a tsunami (tidal wave) as it approaches shore. Describe what is happening in the graph.



2. The graph below represents a student taking an exam. Describe what is happening in the graph.



3. **FOREST FIRES** A forest fire grows slowly at first, then rapidly as the wind increases. After firefighters answer the call, the fire grows slowly for a while, but then the firefighters contain the fire before extinguishing it. Which graph represents this situation?

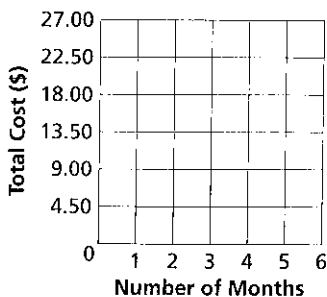


INTERNET NEWS SERVICE For Exercises 4–6, use the table that shows the monthly charges for subscribing to an independent news server.

Number of Months	1	2	3	4	5
Total Cost (\$)	4.50	9.00	13.50	18.00	22.50

4. Write the ordered pairs the table represents.

5. Draw a graph of the data.



6. Use the data to predict the cost of subscribing for 9 months.

7. **SAVINGS** Jennifer deposited a sum of money in her account and then deposited equal amounts monthly for 5 months, nothing for 3 months, and then resumed equal monthly deposits. Sketch a reasonable graph of the account history.

