

Name Key Hour _____ Date _____

Adding & Subtracting Fractions REVIEW

Directions: Add or Subtract. Write in *simplest form*.

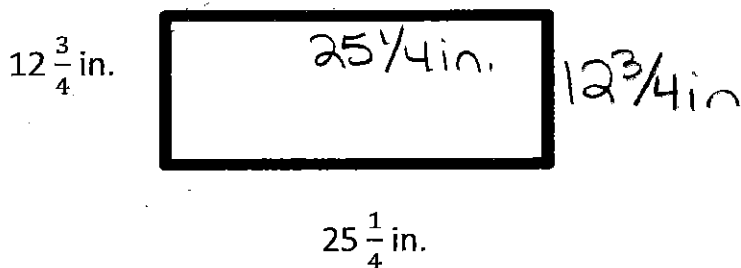
$$1.) \frac{5}{7} + \frac{2}{7} = \frac{7}{7} = \textcircled{1}$$

$$2.) -\frac{3}{12} + \frac{7}{12} = \frac{4}{12} = \textcircled{\frac{1}{3}}$$

$$3.) 8\frac{2}{10} - 2\frac{5}{10} = \frac{82}{10} - \frac{25}{10} = \frac{57}{10} = \textcircled{5\frac{7}{10}}$$

$$4.) -1\frac{3}{6} - 3\frac{5}{6} = -\frac{9}{6} - \frac{23}{6} = -\frac{32}{6} = -5\frac{2}{6} = \textcircled{-5\frac{1}{3}}$$

5.) Find the perimeter of the rectangle below.



$$12\frac{3}{4} + 25\frac{1}{4} = 37 + \frac{3}{4} + \frac{1}{4} = 37 + \frac{4}{4} = 37 + 1 = 38$$

$$2(38) = \textcircled{76 \text{ in}}$$

$$6.) \frac{5}{6} - \frac{1 \times 3}{2 \times 3} = \frac{5}{6} - \frac{3}{6} = \frac{2 \div 2}{6 \div 2} = \textcircled{\frac{1}{3}}$$

$$7.) -\frac{7}{8} + \frac{1 \times 2}{4 \times 2} = -\frac{7}{8} + \frac{2}{8} = \textcircled{-\frac{5}{8}}$$

$$8.) 1\frac{1}{2} + \frac{2}{3} = \frac{3 \times 3}{2 \times 3} + \frac{2 \times 2}{3 \times 2} = \frac{9}{6} + \frac{4}{6} = \frac{13}{6} = \textcircled{2\frac{1}{6}}$$

$$9.) 9\frac{1}{3} + (-2\frac{1}{2}) = \frac{28 \times 2}{3 \times 2} - \frac{5 \times 3}{2 \times 3} = \frac{56}{6} - \frac{15}{6} = \frac{41}{6} = \textcircled{6\frac{5}{6}}$$

10.) Margaret needs $2\frac{1}{4}$ cups of flour. She has only $1\frac{1}{3}$ cups. How much does she need to borrow from her neighbor Rita?