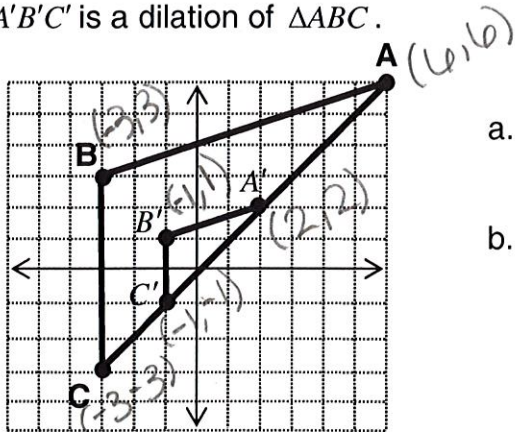


counter clockwise  $(x, y) \rightarrow (-y, x)$

14) Write the coordinates of point H(-5, -2) after a rotation of  $270^\circ$  about the origin.

- a. (-5, 2)      **b. (-2, 5)**      c. (2, -5)      d. (5, 2)

15)  $\Delta A'B'C'$  is a dilation of  $\Delta ABC$ .



a. What is the scale factor of the dilation?  $\frac{1}{3}$

b. Was this an enlargement or a reduction?

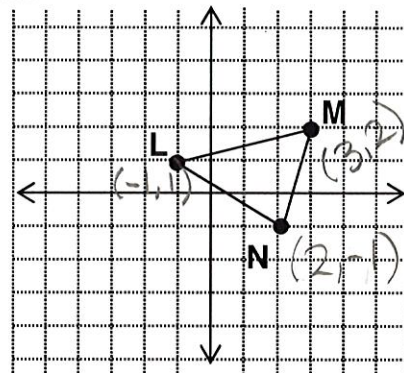
reduction

16) Given the following figure, perform a dilation of the figure using a **scale factor of 2**.

$L'$   $(-2, 2)$

$M'$   $(6, 4)$

$N'$   $(4, -2)$



17) Tell whether the following image is a translation, reflection, rotation, or dilation of the pre-image (gray figure)

- a. translation  
b. rotation  
**c. reflection**  
d. dilation

